

PRODUCT DATA SHEET

P-100 INJECTION SYSTEM



PRODUCT DESCRIPTION

The P-100 injection system consists of an injection hose, a reinforced pressure hose and a number of couplings, tips, mounting brackets and mounting boxes, which together allow the material to be injected into a construction joint. The injection hose is made of flexible PVC material and has a centrally located conveying channel for injecting. Thanks to the micro gaps located on the sides of the hose, it is possible to evenly distribute the sealing product. The construction of the hose makes the littance impossible to get inside. Moreover, the system includes:

- QUICKY couplings - couplings made of plastic, thanks to which it is possible to connect the end of the injection hose to the pressure hose;
- PVC injection tip allows the hose to be fixed to the formwork and stabilized. Thanks to its flat tip it is easy to attach it to the shuttering panel
- reinforced pressure hose - allows the output of additional injection hoses beyond the outline of the element, its construction allows for the injection in the range of up to 20 bar;
- mounting brackets - their shape allows the hose to be fitted firmly to the ground, and thanks to the holes they can be easily fixed to the ground;
- mounting box - the element to which the injecting hoses are conveyed, it is mounted to the reinforcement or to the formwork;
- grease fitting - the element serving for the proper connection of the injection hose to the pressure-generating device and the material injecting device.

APPLICATION

The system is used to seal the construction joints with the injection material. Its use does not require an interference in the reinforcement line and the formworks structure, and the assembly takes place on an already existing element of construction. The small size of the hose allows to use it on process contacts of the small width elements - the concrete lagging the injection hose should however not be less than 7cm.

INSTRUCTIONS FOR USE

Assembly of the system takes place on an already existing, reinforced concrete element. The injection hose should be placed in the axis of the sealed contact (if the element is wider than 60cm, the hose should be placed about 25cm from the concrete face on the water inlet side, also, two parallel hoses can be used) and fixed to the ground by means of mounting brackets. The length of a single hose should not exceed 10-12m. The inflexion of the hose must be avoided, as this may cause the hose to break. The next step is to connect the pressure hoses to the injection hoses using the QUICKY couplings and bring them to the pre-assembled mounting boxes. while positioning the boxes, the length of a single hose must be take into account, and when injecting the material, the access to the hoses must be provided. Next, the second element should be concreted. The next step is to fix the PVC tips to the formwork and connect them to the injection hoses. When the contacts are loaded by about 80% of the own weight of the construction, the injection can be started by removing the PVC cotter and screwing in its place the grease fitting that connects the hose to the material injecting device. The material injected by the transport channel of the hose fills the gaps in the construction joint, preventing any leakage or capillary rise of water.

STORAGE / TRANSPORT

The elements are stored and transported in rolls and bags. More amount of packaging is transported on pallets and secured with foil.

REFERENCE DOCUMENTS

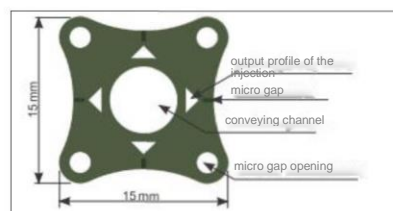
Catalogue: *Sealing systems part 2*

TECHNICAL AND COMMERCIAL DATA

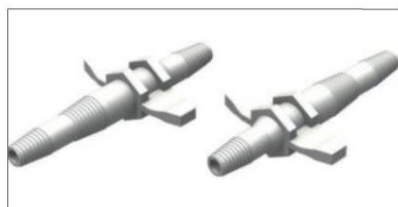
Symbol	Packaging	Sales unit	Unit of measure	Weight [kg/unit]	Article No.
P-100 injection hose	100 lm/roll	1lm	lm	0,18	SU-SI-IW-0-01996
PVC injection tip	50 pcs/bag	50 pcs	pcs	0,009	SU-SI-IW-0-01992
Grease fitting				0,003	SU-SI-IW-0-01990
QUICKY hose coupling				0,005	SU-SI-IW-0-01987
Reinforced PVC pressure hose (white)	50 lm/roll	1 lm	lm	0,200	SU-SI-IW-0-02000
55 mm injection tip	100 pcs/bag	100 pcs	pcs	0,008	SU-SI-IW-0-01991
STECKY bracket				0,700	SU-SI-IW-0-01999
Mounting box	1 pc.	1 pc.		0,250	SU-SI-IW-0-01993
PK-2 mounting box					SU-SI-IW-0-01994
Mounting bracket	300 pcs/bag	300 pcs		0,013	SU-SI-IW-0-01995



P-100 injection hose



Cross section of injection hose P-100



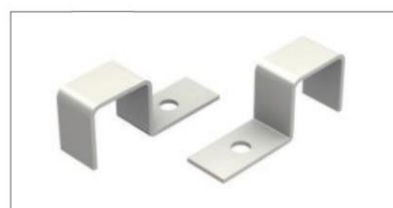
QUICKY hose coupling



PVC injection tip



Reinforced PVC pressure hose (white)



Mounting bracket



mounting box



Grease fittings

2017.08.23/110

This data sheet was developed by FORBUILD SA and remains the property of the company.
 Reprinting, copying and sharing data sheet in whole or in part to persons to whom it is not addressed, without the written permission of FORBUILD SA is prohibited.
 Legal basis - Journal of Laws No. 24/1994 item 83 with later amendments. The Act on copyright and related rights.